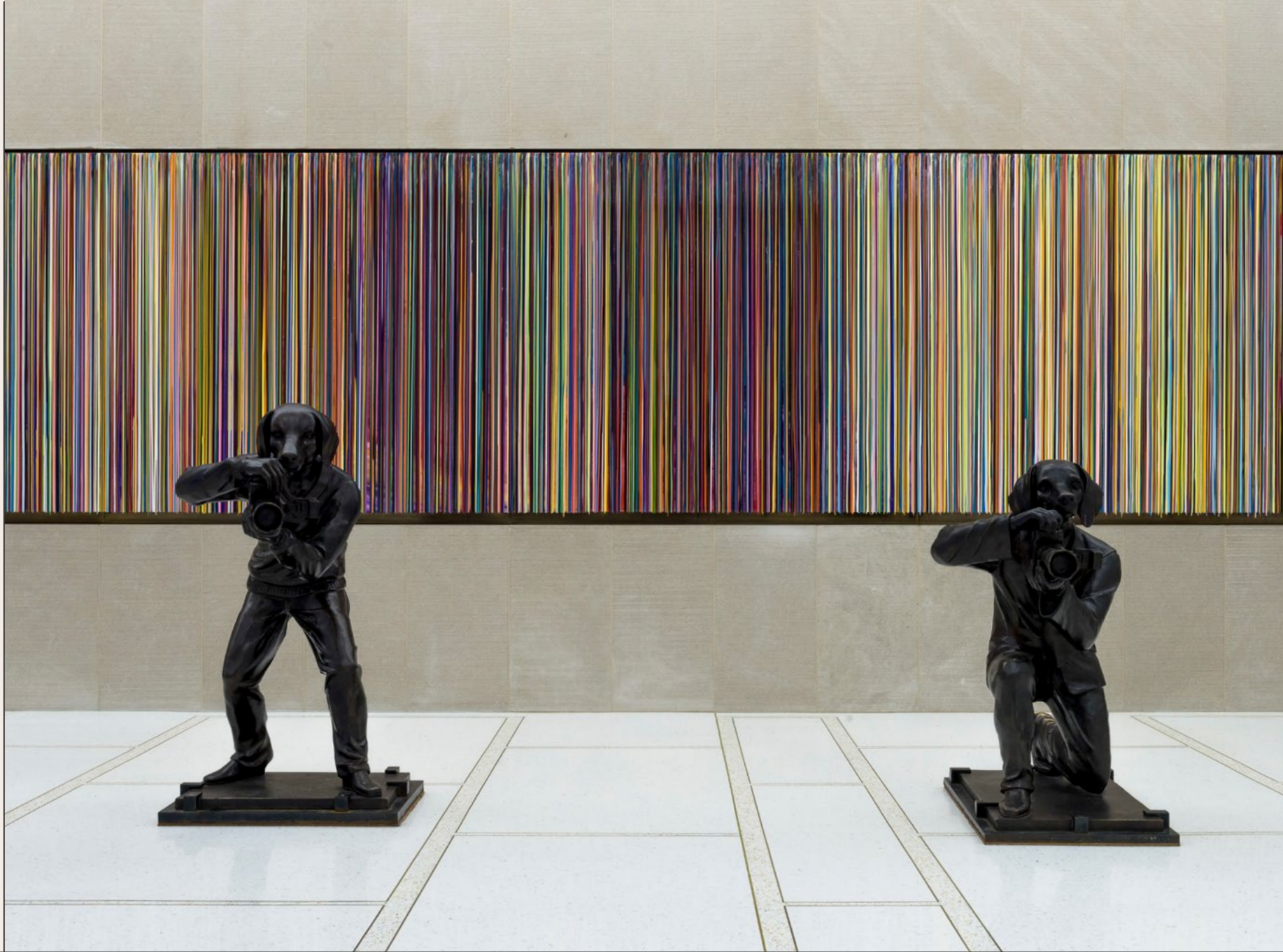


A WORKPLACE THAT

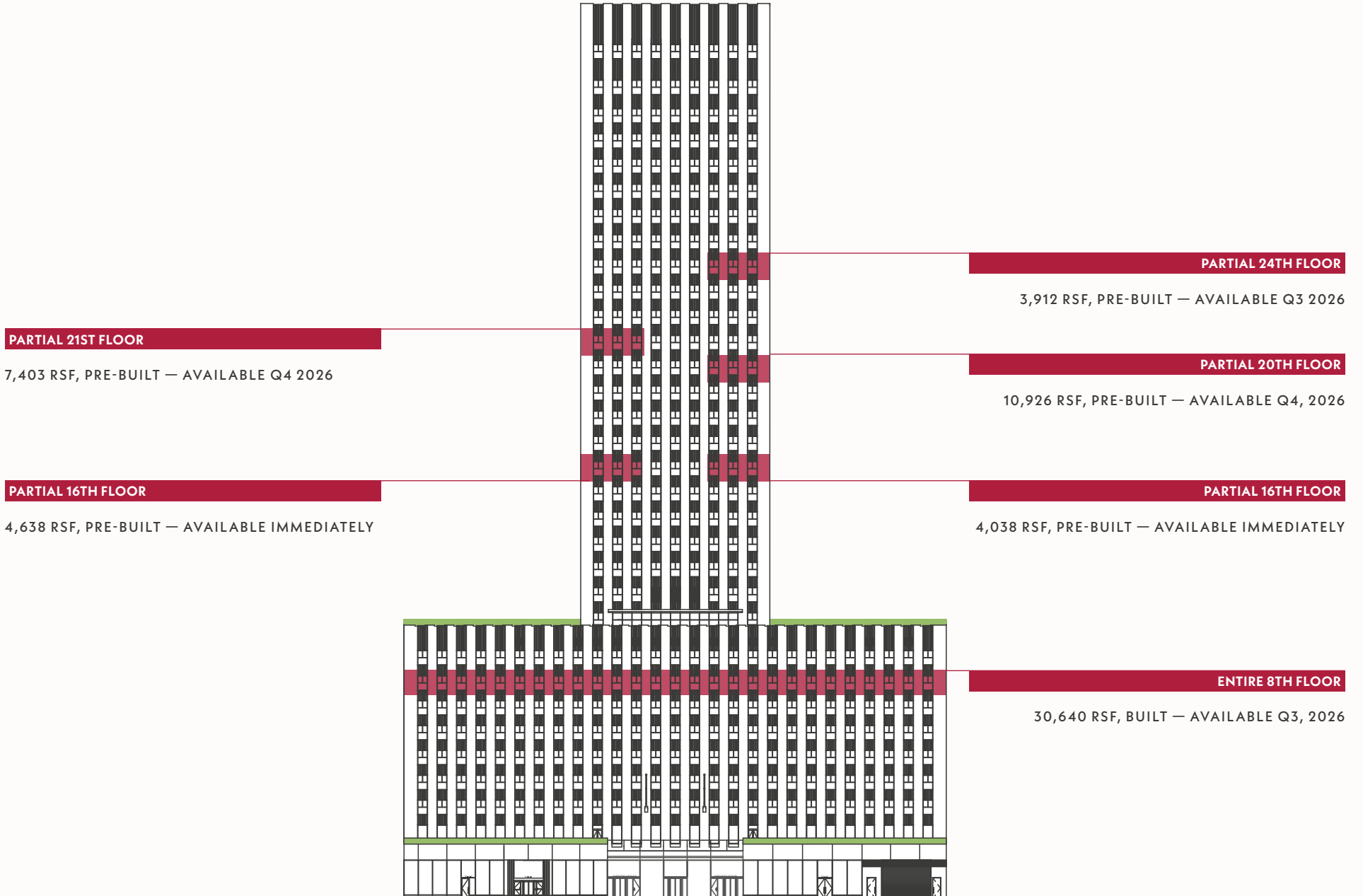


INSPIRES EVERYDAY

75
ROCKEFELLER
PLAZA

Availabilities

FULL AND PARTIAL FLOOR AVAILABILITIES RANGING FROM 3,912 TO 30,640 RSF





Pre-builts

HIGHLY FLEXIBLE LAYOUTS

New, ready and equipped for the future. The pre-builts at 75 Rockefeller Plaza offer workspaces that are conducive to a variety of layouts with flexibility for subsequent layout changes.



75 ROCKEFELLER PLAZA

RESTAURANTS

1. NARO
2. THE MODERN
3. EMPELLON
4. DEL FRISCO'S GRILLE
5. NUSR-ET STEAKHOUSE
6. 53
7. FRESCO BY SCOTTO
8. VILLARD
9. LIMANI
10. LE BERNARDIN
11. THE POLO BAR
12. CASA LEVER
13. OCEANA
14. OCEAN PRIME
15. JUPITER
16. AVRA ROCKEFELLER CENTER

RECREATION

35. RADIO CITY MUSIC HALL
36. TOP OF THE ROCK
37. ST. PATRICK'S CATHEDRAL
38. ZIEGFELD THEATRE
39. THE JAZZ CLUB
40. BROADWAY THEATRE
41. MUSEUM OF MODERN ART
42. CARNEGIE HALL
43. THE BAR ROOM

BARS

44. CITY WINERY
45. LE CHALET
46. THE WHITBY
47. ALDO SOHM WINE BAR
48. HAVEN ROOFTOP
49. THE GOLD ROOM

RETAIL

17. NIKE HOUSE OF INNOVATION
18. TIFFANY & CO.
19. SAKS FIFTH AVE
20. APPLE STORE
21. CARTIER
22. COACH
23. TAG HEUER
24. KULE
25. HARRY WINSTON
26. ARMANI
27. MANGO
28. J. CREW
29. MICHAEL KORS
30. LULULEMON
31. PROPER CLOTH

CAFÉS

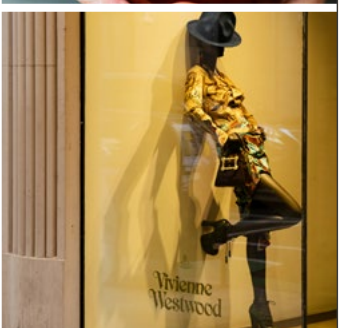
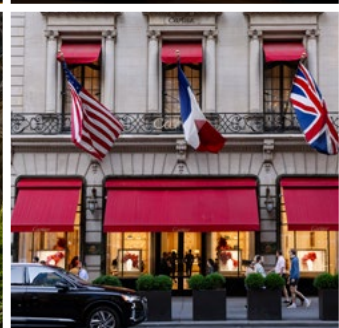
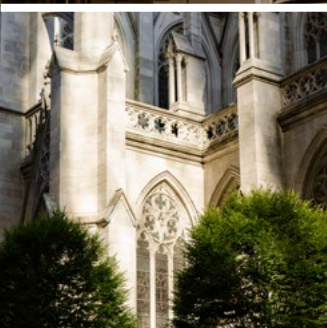
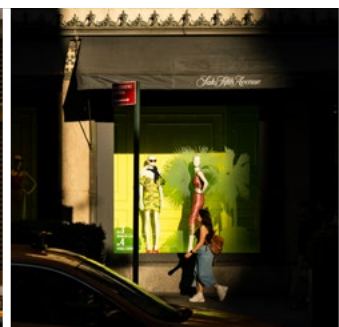
50. STARBUCKS
51. WATCHOUSE 5TH AVE
52. IRVING FARM
53. BLUE BOTTLE
54. TARTINERY CAFE

HOTELS

55. BACCARAT HOTEL
56. THE JEWEL
57. THE PENINSULA
58. THE ST. REGIS
59. OMNI BERKSHIRE PLACE
60. HILTON MIDTOWN

GYMS

32. EQUINOX
33. ORANGETHEORY
34. CRUNCH FITNESS



Neighborhood

THE PULSE OF NEW YORK

This prestigious location offers the convenience of renowned retail, fine and casual dining, five-star hotels, premier corporate neighbors and an integrated transportation hub.

Amenity Space

TO SUIT ALL NEEDS

Featuring soaring views of Midtown Manhattan and 30,000 square feet of multi-floor workspace, 75 Rockefeller Plaza offers tenants a beautifully designed members-only work and social club located at the pinnacle of the building.





Amenity Space

TO SUIT ALL NEEDS

The perfect setting for business meetings, entertaining, and private events, the space includes a private lounge, gallery, and state-of-the-art boardrooms. Powered by best-in-class hospitality, 75 Rockefeller Plaza is the ideal destination for hosting and cultivating your most important relationships.

Specifications

75 ROCKEFELLER PLAZA, NEW YORK, NY 10019

GENERAL

YEAR BUILT AND REDEVELOPED

1947, 2017

ARCHITECT

Carson and Lundin Architects

BUILDING AREA

625,000 square feet

RETAIL ESTABLISHMENTS

American Girl

TRANSPORTATION

Direct access to the B,D,E,F and M subway lines and major buses. Conveniently located within steps from Grand Central Terminal and Times Square

RECENT CAPITAL IMPROVEMENTS

Renovated lobby and main entrance, restoration of the building façade and windows, upgraded elevator equipment and interiors, fire alarm system, access control and CCTV system, HVAC system and Building Management System (BMS)

AMENITIES

24/7 building access, on-site property management, bike storage, loading dock, messenger center, internet based tenant work order system and visitor management system

ELEVATORS

NUMBER OF ELEVATORS

Excluding vertical transportation for retail tenants, the building has a total of twelve passenger elevators and two service elevators

SECURITY

GENERAL

The building is monitored via 24/7 uniformed security guards stationed at the lobby concierge desk, a fully integrated CCTV, x-ray machine, visitor management and turnstile access card system and loading dock master

CONSTRUCTION

HOURS OF OPERATION

Standard hours of HVAC operation are 8 am to 6 pm, Monday through Friday

AIR CONDITIONING

The building is cooled with (2) 800 ton and (1) 400 ton electrical centrifugal chillers. The cooling for the interior zone on the low rise floors is provided by (2) 10 ton floor mounted vav AHU's while the cooling for the interior of the high rise floors is provided by (4) 2.5 ton ceiling mounted constant volume fan coil units. Perimeter is cooled and heated by 1,698 Train Fan Coil Units. One heat exchange plate for free cooling

VENTILATION SYSTEMS

A.H.U.'s on the 33rd floor and 9th floor mezzanine provide ventilation to the entire building

SUPPLEMENTAL HVAC

Each high rise floor is allotted 15 tons per floor while each low rise floor is allotted 30 tons per floor. This condenser water is available 24/7

ELECTRICITY

GENERAL

Each floor is designed to allow (1) 6 or 6.5 watts USF, exclusive of base building A/C

METHOD OF MEASURING TENANT CONSUMPTION

Tenants are sub-metered by TNE. Costs related to base building electric consumption are reflected via operating expenses

ELECTRIC CLOSETS

There are (2) closets on floors 2-9 and (1) closet on floors 10-32

EMERGENCY POWER

1250 kw generator for fire, life safety, elevators

ADDITIONAL POWER

Additional electric can be made available at Tenant's expense, subject to Landlord's review of Tenant's requirements

TELECOMMUNICATIONS

GENERAL

Point of Entry is on 51st street with future provisions for POE on 52nd street. Three (3) independent sources of fiber connectivity. Additional telecommunication riser space to accommodate new ISP's

PROVIDERS



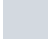
Spectrum, AT&T, Verizon Business Verizon DAS System on all floors for cell phone coverage

AS BUILT

8TH Floor Suite 800

Offices	2
Workstations	213
Conference Rooms	6
Pantry/Coffee	1
IT Room	1
Closet/Storage	11
Copy/Print Area	3
Phone Room/Booth	4
<hr/>	
Total	215
RSF	30,640

LEGEND

-  Offices
-  Conference Rooms
-  Workstations
-  Pantries/IT Rooms/Storage/Print Areas

52ND STREET





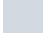

51ST STREET

AS BUILT

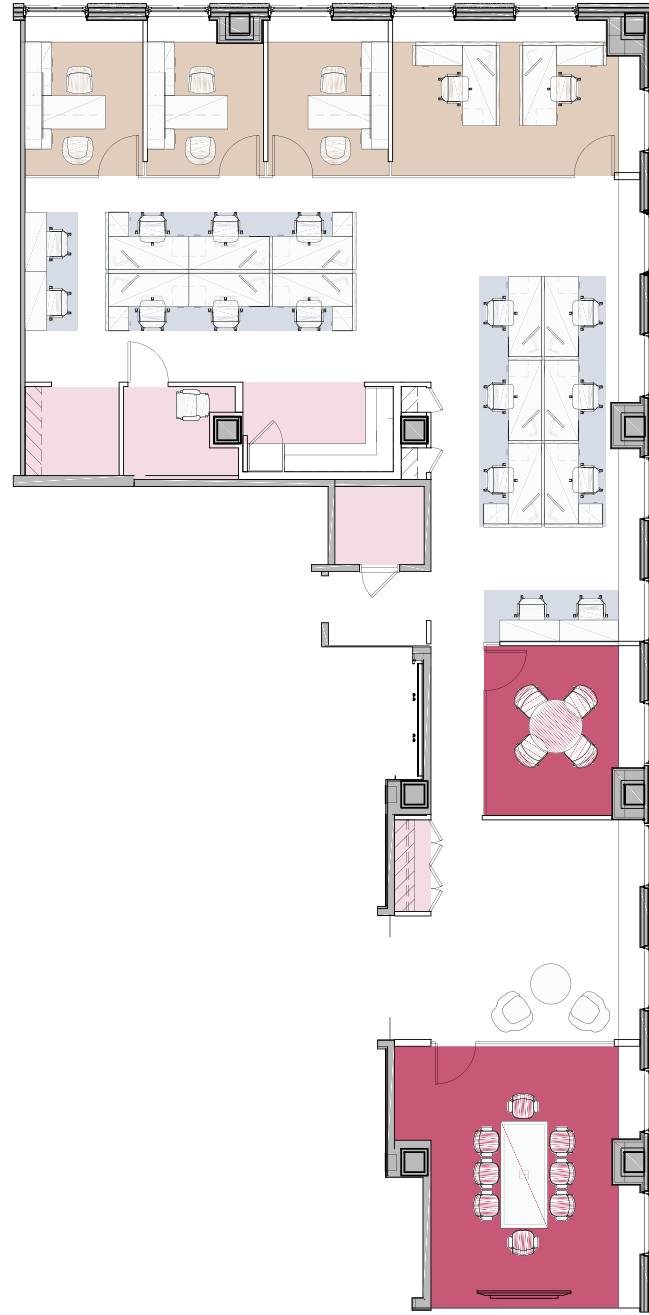
16TH Floor Suite 1600A

Offices	4
Workstations	16
Conference Rooms	2
Pantry/Coffee	1
IT Room	1
Closet/Storage	3
Copy/Print Area	1
<hr/>	
Total	24
RSF	4,638

LEGEND

-  Offices
-  Conference Rooms
-  Workstations
-  Pantries/IT Rooms/Storage/Print Areas

52ND STREET





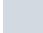

51ST STREET

AS BUILT

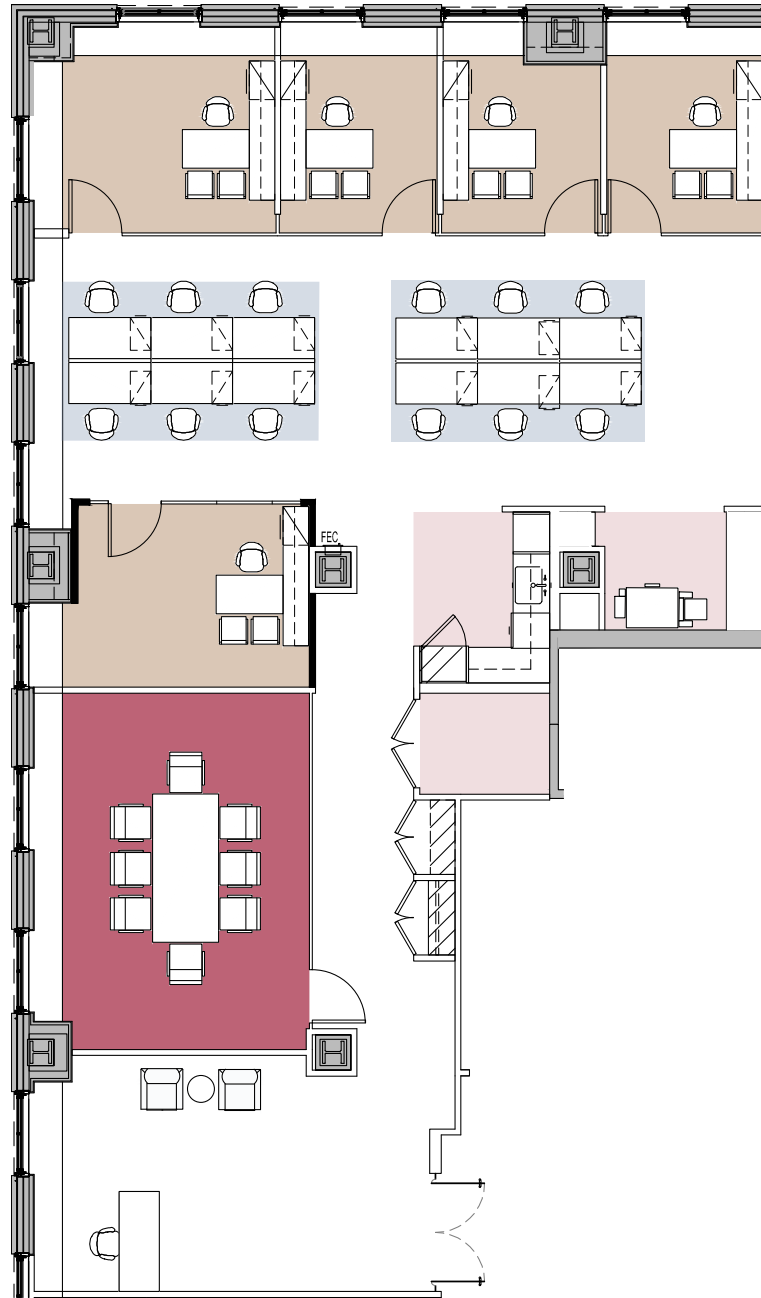
16TH Floor Suite 1600B

Offices	5
Workstations	12
Conference Room	1
Pantry/Coffee	1
IT Room	1
Closet/Storage	2
Copy/Print Area	1
Reception	1
<hr/>	
Total	18
RSF	4,038

LEGEND

-  Offices
-  Conference Rooms
-  Workstations
-  Pantries/IT Rooms/Storage/Print Areas

52ND STREET



51ST STREET

AS BUILT

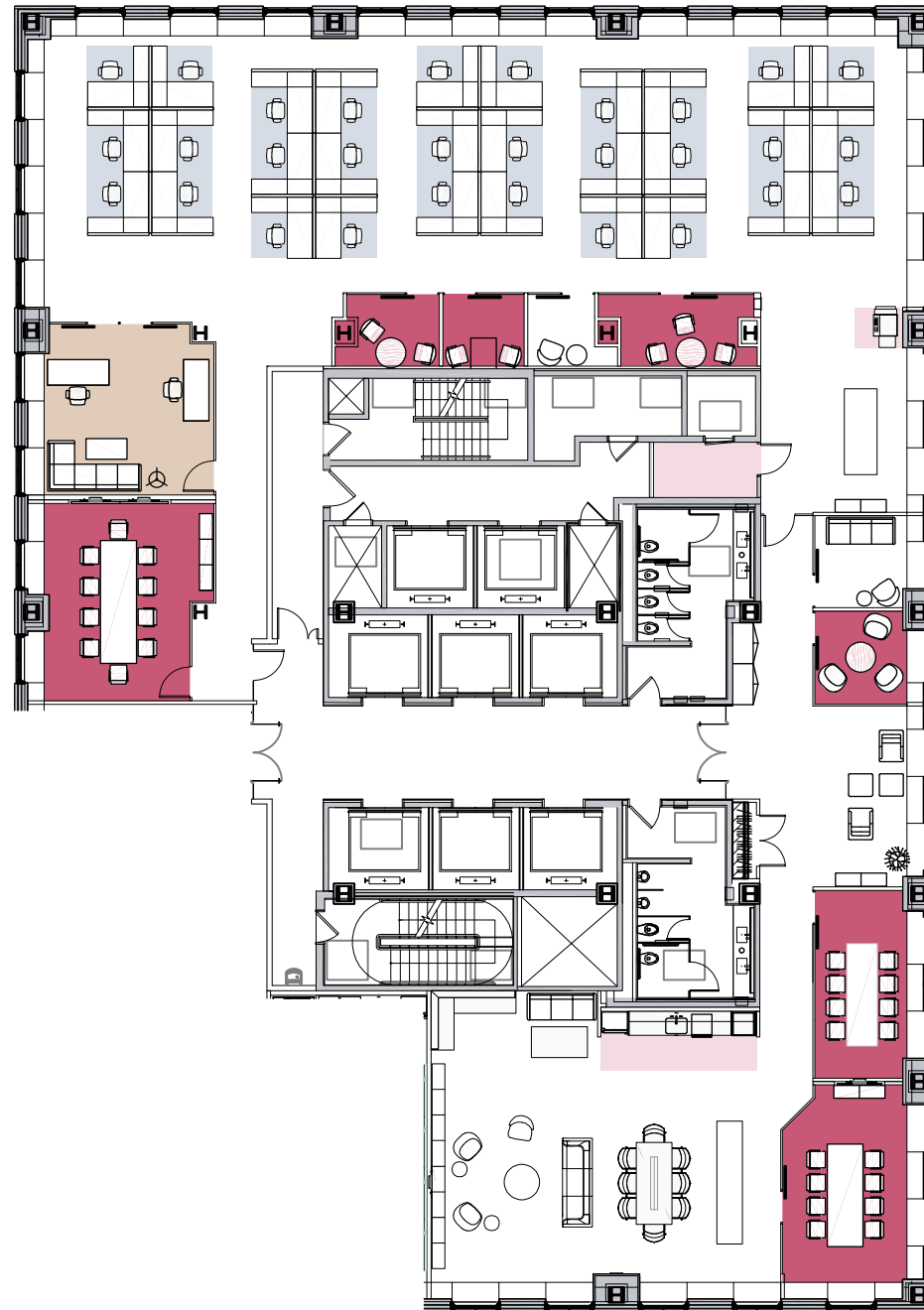
20TH Floor Suite 2000A

Offices	1
Workstations	30
Conference Rooms	7
Pantry/Coffee	1
IT Room	1
Closet/Storage	1
Copy/Print Area	1
Phone Room	1
Wellness Room	1
<hr/>	
Total	31
RSF	10,926

LEGEND

- Offices
- Conference Rooms
- Workstations
- Pantries/IT Rooms/Storage/Print Areas

52ND STREET





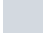

51ST STREET

PRE-BUILT

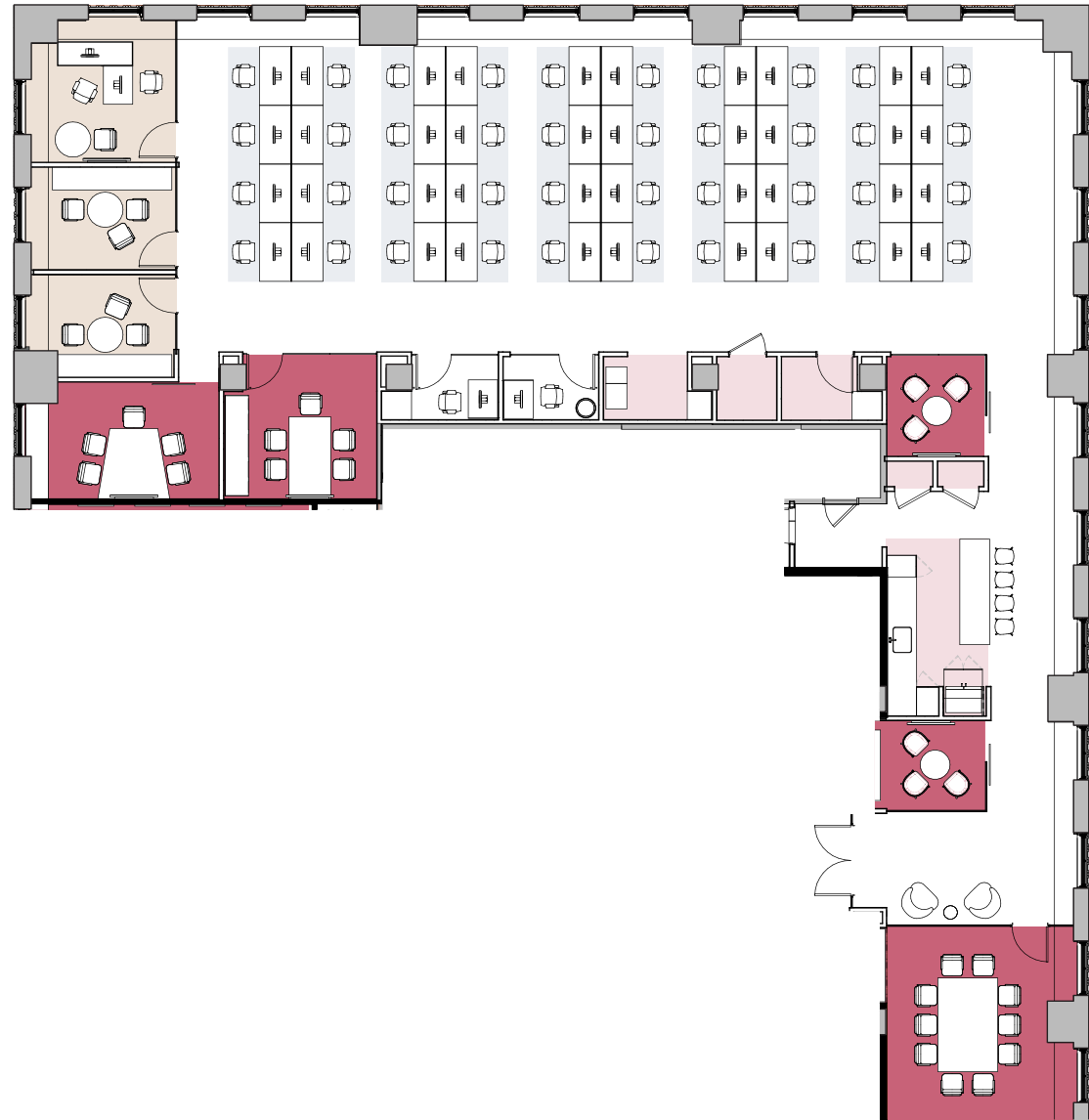
21ST Floor Suite 2100B

Offices	3
Workstations	40
Conference Rooms	5
Pantry/Coffee	1
Closet/Storage	1
Copy/Print Area	1
Phone Room	2
<hr/>	
Total	43
RSF	7,403

LEGEND

-  Offices
-  Conference Rooms
-  Workstations
-  Pantries/IT Rooms/Storage/Print Areas

52ND STREET



51ST STREET



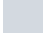

PRE-BUILT

24TH Floor Suite 2400A

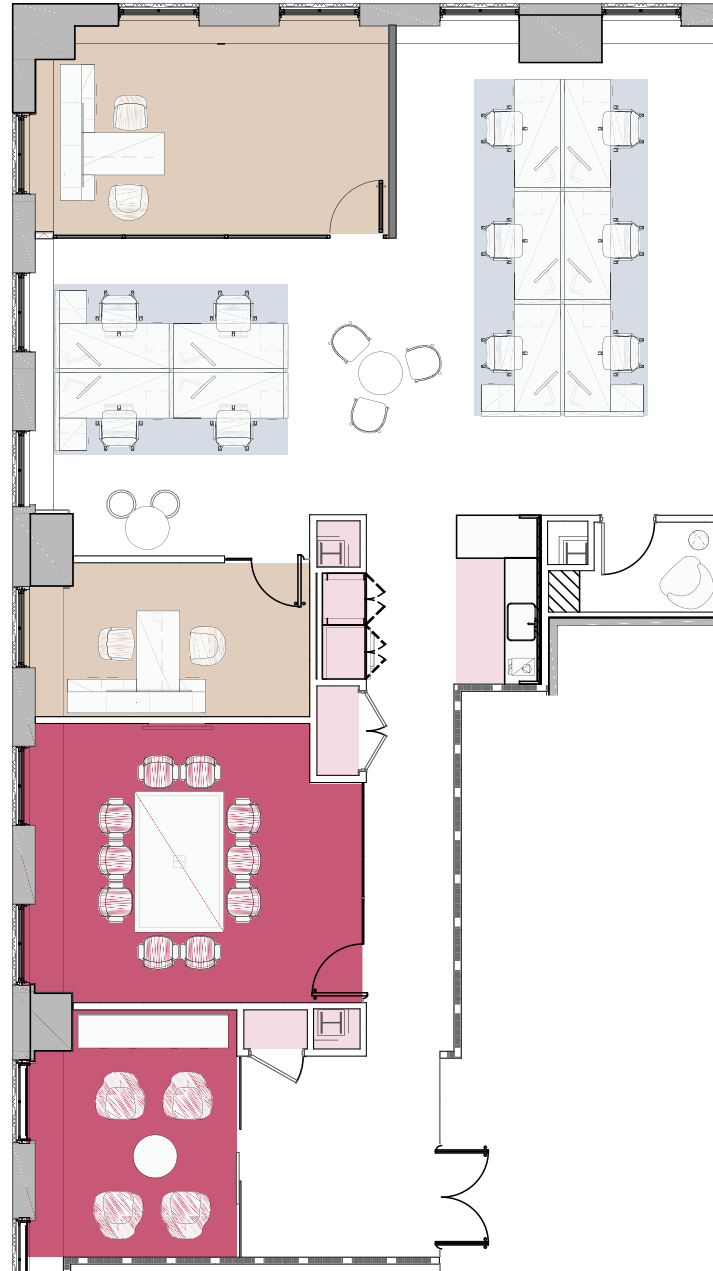
Offices	2
Workstations	10
Conference Rooms	2
Pantry/Coffee	1
Closet/Storage	2
Copy/Print Area	1
Phone Room	1

Total	12
RSF	3,912

LEGEND

-  Offices
-  Conference Rooms
-  Workstations
-  Pantries/IT Rooms/Storage/Print Areas

52ND STREET



51ST STREET

LEASING CONTACTS



BRUCE E. MOSLER

Bruce.Mosler@cushwake.com
212.841.7900

ETHAN SILVERSTEIN

Ethan.Silverstein@cushwake.com
212.698.2694

ANTHONY LOPRESTI

Anthony.LoPresti@cushwake.com
212.841.7701

CONNOR B. DAUGSTRUP

Connor.Daugstrup@cushwake.com
212.841.7964

BIANCA DIMAURO

Bianca.DiMauro@cushwake.com
212.841.7562



DANIEL BIRNEY

DBirney@rxr.com
212.715.6153

WALTER ROONEY

WRooney@rxr.com
212.715.6122

HEIDI STEINEGGER

HSteinegger@rxr.com
212.444.3792